

Specification sheet LX 1576

Parapet drainage system Series 43 Parapet direct for small roof areas, weir height 60 mm

Emergency drainage

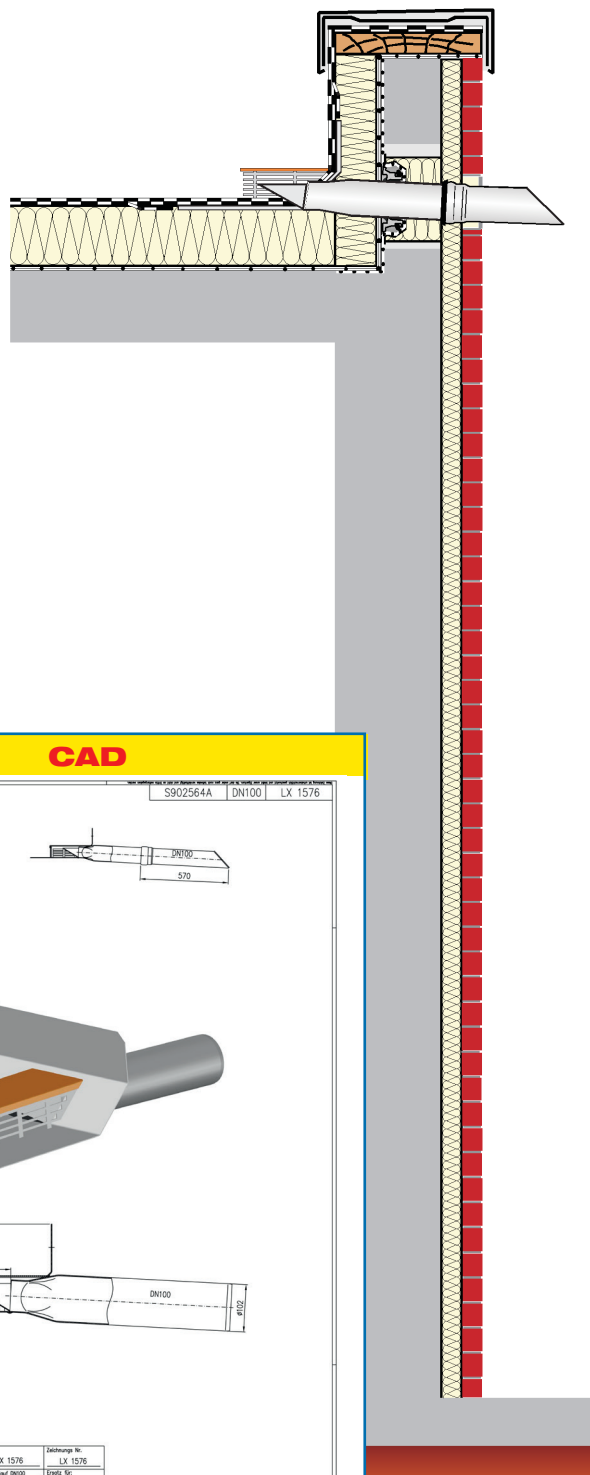
Gravity flow

Silent

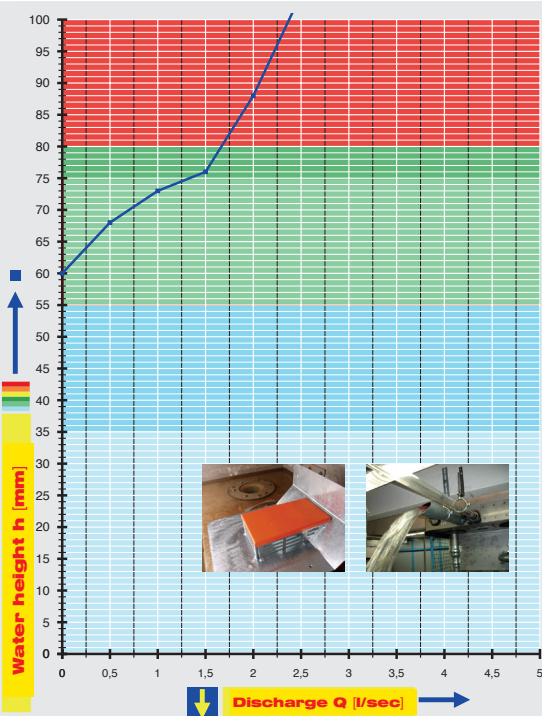
Discharge rate:	1,3 l/sec
Water height:	75 mm
Roof penetration:	0 mm
Diameter:	DN 100
LX-Number:	LX 1576
Weir height:	60 mm
Drain:	ventilated
Downpipe:	ventilated
Downpipe height:	-
Drainage:	on floor
Flangeform:	Bondging flange 45°

LX 1576 Piece list

- 1 x Art.-No. 01326.100X, Parapet drain
- 1 x Art.-No. 15199.100X, LORO-X Spout
- 1 x Art.-No. 13235.100X, LORO-X Sliding flange
- 1 x Art.-No. 00911.100X, LORO-X Sealing element
- 1 x Art.-No. 00986.000X, LORO-X Lubricant

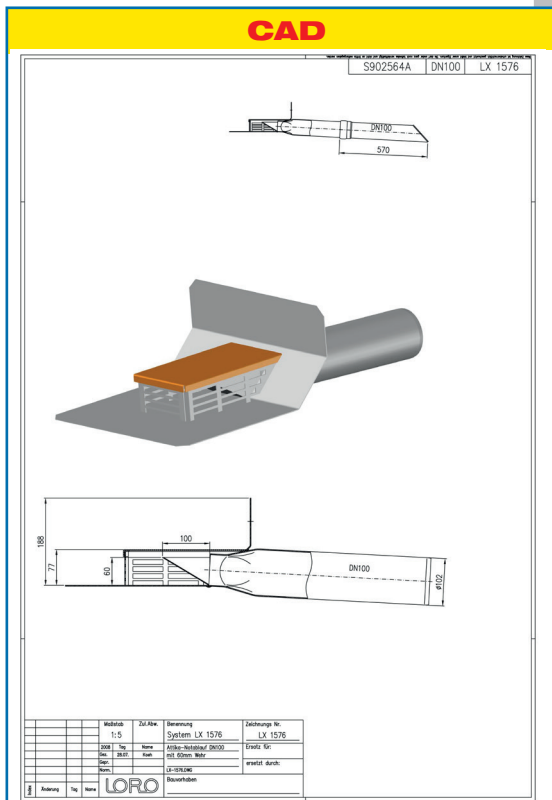


hQ - Head Discharge curve



Systemshape

CAD



Systemshape

Water height	mm	20	25	30	35	40	45	50	55	60	65	70	75	80	85	90	95	100
Discharge	l/sec	-	-	-	-	-	-	-	-	-	-	0,7	1,3	1,7	1,9	2,0	2,2	2,4
Silent																		

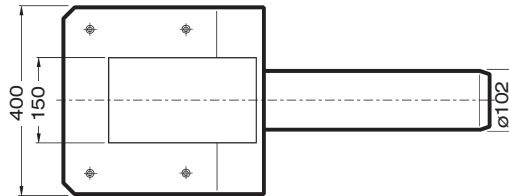
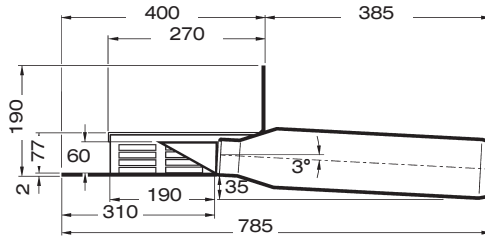
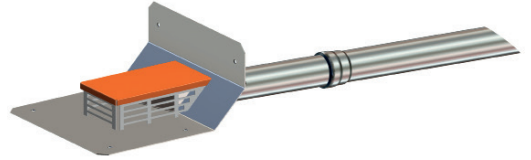
LORO-X Parapet direct emergency drainage, DN 100 for small roof areas, weir height 60 mm

LX1576-3X

Series 43

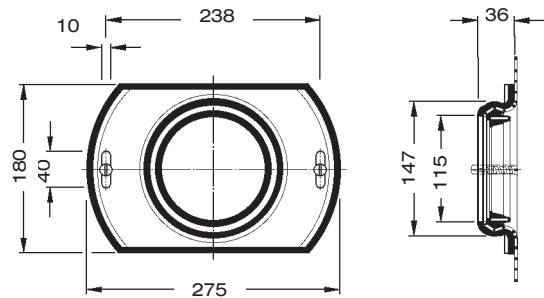
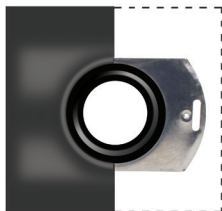
Drain Art.-No. 01326.100X
Weight: 5,4 kg

with bonding flange
for bituminous roofing sheets
Weir height 60 mm



LORO-X Sliding flange

with pre-installed connection sleeve for vapor barrier made of bituminous or plastic-roofing sheets (please indicate manufacturer and material of the sealing sheet to be attached), made of galvanized steel, including fastening screws
Art.-No 13235.100X
Weight: 1,7 kg



Heat tracing: Lorowerk recommends to check all drains and pipes with regard to their frost-sensibility. Where necessary, these parts should be upgraded with heat tracing.